



# AVISCEA BIOSCIENCE®

Specialty ELISA Kit Monoclonal Antibody Manufacturer

New REG1A Human ELISA

## REG1A (Regenerating Family Member 1 Alpha )

REG1A (Regenerating Family Member 1 Alpha) plays a crucial role in tissue regeneration, cell proliferation, and inflammatory response management. The REG1A is primarily secreted by the exocrine pancreas but is also active across the digestive system and other tissues.

### Biological Functions:

- Tissue Regeneration: Acts as a potent growth factor that triggers pancreatic beta-cell replication and tissue repair.
- Anti-Apoptosis: Prevents programmed cell death and helps preserve tissue mucosal barriers.
- Inflammation Regulation: Upregulated via cytokine signaling pathways (like IL-6 and IL-22 via JAK/STAT3) to suppress severe inflammation.
- Calcification Inhibition: Inhibits the spontaneous precipitation of calcium carbonate in pancreatic fluids.

### Clinical Significance

- Pancreatitis & Sepsis: Serum levels of the REG1A protein surge during acute inflammation, making it a highly accurate biomarker for sepsis.
- Oncology: It is frequently overexpressed in various malignancies—such as colorectal, pancreatic, bladder, and non-small cell lung cancers. Elevated levels often correlate with increased tumor invasiveness, metastasis, or distinct survival outcomes.
- Inflammatory Bowel Disease (IBD): REG1A expression rises sharply to alleviate mucosal injury and stabilize tight junction barriers.
- Neurodegenerative Research: Studies found REG1A deposition in the brains of Alzheimer's patients, where it interacts with receptors to promote neurite outgrowth but may also correlate with abnormal tau phosphorylation.

### The Feature of Aviscera Bioscience' REG1A ELISA Kits:

- Antibody Specificity to rh REG1A .
- Calibration by rh REG1A Recombinant.
- Samples Tested
- Assay for 4~ 5 hours.

# New Human REG1A ELISA Kit

## Human Regenerating Protein 1 Alpha (REG1A) ELISA Kit

Catalog No.: SK00360-06

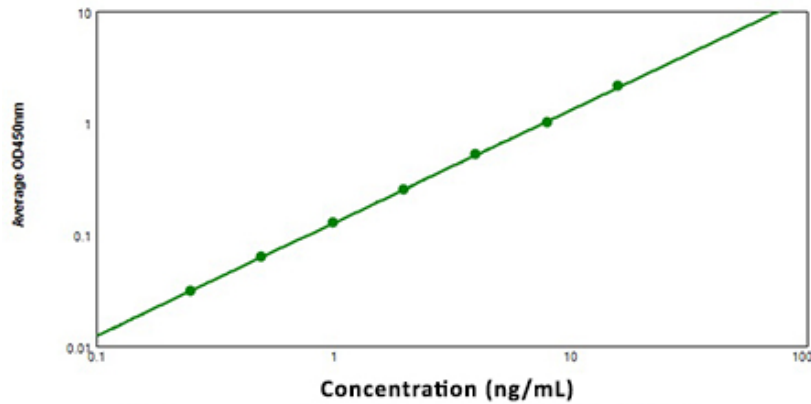
Assay range: 0.25 ~ 16 ng/mL

Sensitivity: 0.1 ng/mL

Calibration: rh REG1A Rec.

Specificity: human REG1A

Sample Type: Serum, Plasma

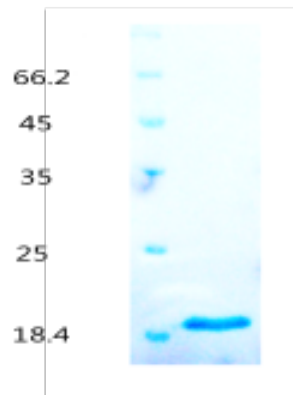


## Aviscera Bioscience REG1A ELISA

The research pooled samples were diluted by Dilution Buffer DB10. Its linearity and recovery was assayed by Human REG1A ELISA Kit SK00360-06

Sample	Dilution Factor	Assayed (ng/mL)	Final (ng/mL)	Recovery (%)
Human EDTA Plasma	5 X	2.319	11.595	100
Human EDTA Plasma	10 X	1.173	11.730	101
Human Serum	5 X	2.048	10.240	100
Human Serum	10 X	1.016	10.160	100

## Human REG-1alpha Rec. 00360-01-100



# New High Sensitivity Human REG1A ELISA Kit

## REG1A Human ELISA Kit High Sensitivity (Plasma, Serum)

Catalog No.: SK00360-08

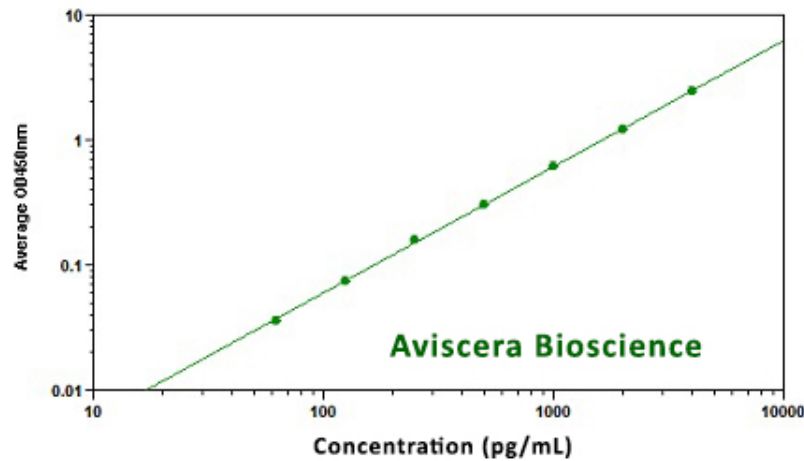
Assay range: 31.25 ~ 4000 pg/mL

Sensitivity: 15 pg/mL

Calibration: rh REG1A Rec.

Specificity: human REG1A

Sample Type: Serum, Plasma

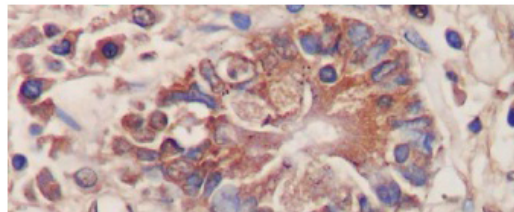


## Anti Human REG1A Monoclonal Antibody

Catalog No.: A00360-04-100 Clone: E7A4

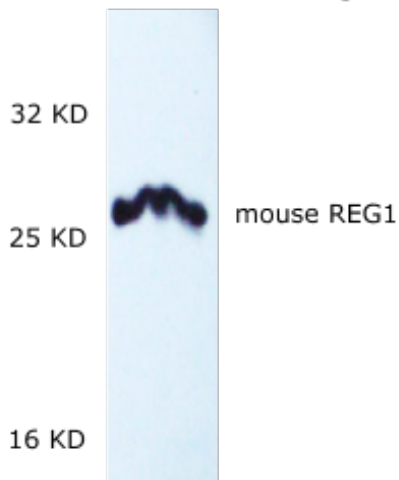
Host: Mouse

Immunogen: rh REG1A (23-166)



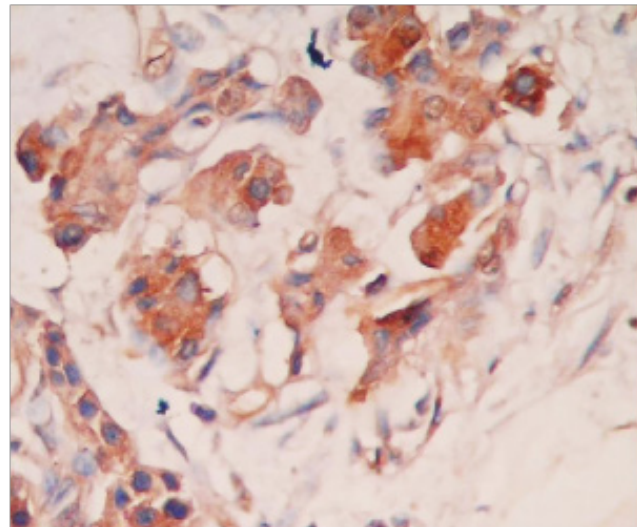
Immunostaining paraffin-embedded Human Pancreas Cancer Tissues by Anti REG1A MAB at 2~4 ug/mL (ABC).

Rabbit Anti REG-1(Mouse) IgG  
A00360-03-100 at 2-4 ug/ml



Mouse brain tissues homogenates  
under reduce condition  
The MW of mouse REG-1 was shift due  
to glycosylation.

Staining paraffin-embedded human pancreas  
tissues by Rabbit Anti REG-1alpha (Human) IgG  
(A00360-01-100) at 2-4 ug/ml (ABC)



## Human REG-1A (23-166)/ Regenerating Protein I Alpha (23-166)

23

QEAQTELPQA RISCPEGTNA YRSYCYYFNE  
DRETWVDADL YCQNMNSGNL VSVLTQAEGA  
FVASLIKESG TDDFNWIGL HDPKKNRRWH  
WSSGSLVSYK SWGIGAPSSV NPGYCVSLTS  
STGFQKWKDV PCEDKFSFVC KFKN-166

### Aviscera Bioscience REG1A Products

Human REG1A ELISA Kit	SK00360-06
Human REG1A Recombinant	00360-01-100
Anti REG1A Monoclonal Antibody	A00360-05-100
	A00360-06-100
	A00360-07-100
	A00360-08-100
	A00360-04-100

Website: [www.AvisceraBioscience.net](http://www.AvisceraBioscience.net)  
Email: [Info@AvisceraBioscience.com](mailto:Info@AvisceraBioscience.com)

Product Name	Catalog No.	Size	Price (\$)
Human REG1A ELISA Kit (Serum, plasma)	SK00360-06	96 T	490
High Sensitivity Human REG1AELISA Kit (plasma, Serum)	SK00360-08	96T	520
Rabbit Anti REG1A Mouse IgG	A00360-03-100	100 ug	360
Mouse Anti Human REG1A Monoclonal Antibody	A00360-06-100	100 ug	460
Mouse Anti Human REG1A Monoclonal Antibody	A00360-07-100	100 ug	460
Mouse Anti Human REG1A Monoclonal Antibody	A00360-08-100	100 ug	390
Mouse Anti Human REG1A Monoclonal Antibody	A00360-04-100	100 ug	460
Mouse Anti Human REG1A Monoclonal Antibody Biotinylated	A00360-05-50B	50 ug	510
Mouse Anti Human REG1A Monoclonal Antibody Biotinylated	A00360-06-50B	50 ug	510
Rabbit Anti REG1A (Human) IgG	A00360-01-100	100 ug	360
Human REG1A His Tag Rec.	00360-01-100	100 ug	360
Mouse REG1A His Tag Rec.	00360-03-100	100 ug	360

## Mouse REG-1 Rec.

00360-03-100

